

MeshSmart Wireless Universal Port (WUP) Controller

Description

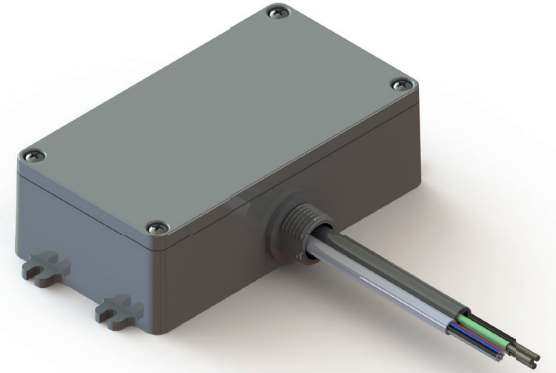
MeshSmart LED wireless control system provides the solutions necessary to take control of your energy and maintenance costs. The unique technology inside this system allows for remote controlling and monitoring of all light fixtures through a web-enabled central management system.

The control of light means much more than turning on the lights at dusk. As energy efficiency demands drive outdoor lighting, control means to be able to program each fixture, save energy cost while keeping light turned on, measure per pole energy usage as well as detect and correct problems. Additional features include...

- Easy to mount – the compact design with waterproof feature offers you the flexibility of mounting our WUP controller inside or outside your light fixture.
- Accurate Power Measurement – utility-grade energy metering per pole so you pay for what is used
- Dual Channel control – two 0 - 10V control allows control both dimming and color temperature
- Easy-to-use system - single, group, or whole network control with scheduling system

Features

- Dual Channel Dimming 0-10V
- On/Off Control
- Power Measurement +/- 1%
- Energy Monitoring
- Advanced Scheduling
- Customized Grouping
- Easy Commissioning
- IP67
- Allow wire connections to internal terminal block
- Optional external antenna connection



Specifications

- Input Voltage: 120-480V (+/- 10%)
- Max Load Current: 120-277V:10A; 347V,480V: 5A
- Radio Frequency: 2.4GHz - Excellent immunity to other 2.4 GHz devices for reliable co-existence
- Network Communication: IEEE 802.15.4
- Dimming: 0-10V
- Dimming Channel: 2
- Operating Temperature: -40 to +50C
- Surge: 2.5KV
- Power consumption: <2W
- Security: AES Encryption and ZigBEE based authentication
- Power Measurement Error: <1%
- Motion sensor input: 0-10V
- Daylight sensor input
- Extra digital sensor input: 3
- External relay control output